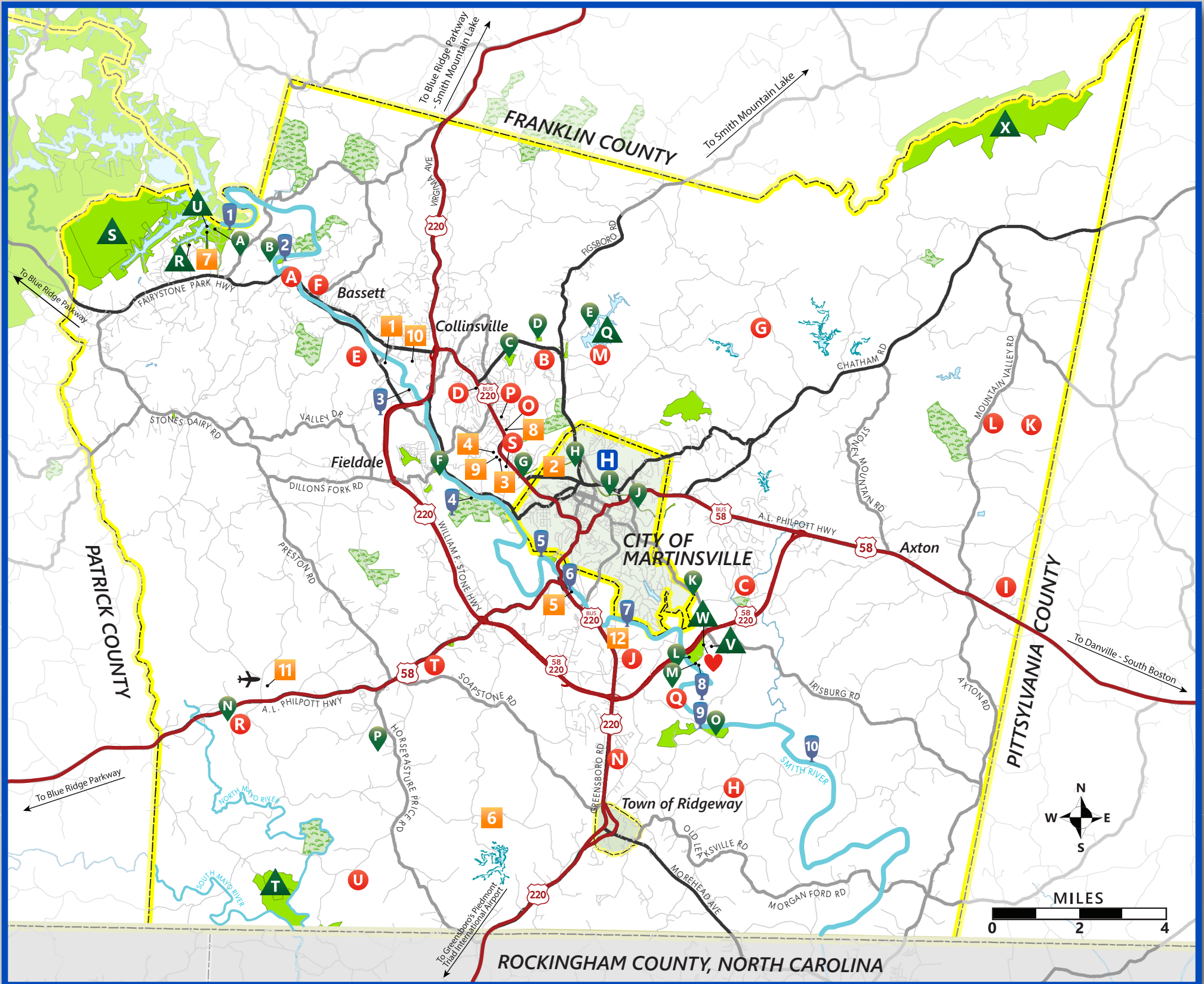


Henry County, Virginia



Map prepared by West Piedmont Planning District Commission, May 2022.

● ATTRACTIONS

- A Bassett Historical Center
- B Beaver Creek Golf Club
- C Chatmoss Country Club (Private Golf Course)
- D Collinsville Farm Market
- E Hamlet Vineyards
- F Historic Bassett Train Depot
- G Imagination Lavender Farm
- H Infinity Acres Petting Ranch
- I Lake Sugar Tree Motorsports Park
- J Martinsville Speedway
- K Mountain Valley Artisan Barn
- L Mountain Valley Brewing
- M P&HCC Walker Theatre
- N Ridgeway Farm Market
- O Rosie's Game Room
- P Scuffle Hill Brewing Company
- Q Smith River Spirits
- R Spencer-Penn Centre
- S Sportlanes Bowling
- T Stonehaus Farms
- U The Sustainable Homestead Institute

■ PLACES TO STAY

- 1 Cahill's Lily Pad RV Park & Campground
- 2 Comfort Inn
- 3 Econo Lodge
- 4 Hampton Inn
- 5 Indian Heritage RV Park & Campground
- 6 Lee Ford Camp
- 7 Philpott Marina Group Campground
- 8 Quality-Dutch Inn
- 9 Quality Inn of Martinsville
- 10 Stoneleigh Estate
- 11 Stuart Hill B&B
- 12 Travelodge

🍷 RIVER ACCESS

- 1 Philpott Dam
- 2 Bassett
- 3 The Great Road
- 4 Fieldale
- 5 Doe Run (No Portage)
- 6 South Martinsville
- 7 Frith Drive
- 8 Monogram Foods Smith River Sports Complex
- 9 Marrowbone Creek
- 10 Mitchell Bridge

🌿 TRAILS

- A Philpott Lake Fitness Interpretive Trail
 - B Lauren Mountain Preserve
 - C Collinsville Jaycee Park
 - D Jack Dalton Park
 - E Rock Ridge Trails
 - F Fieldale Trail and Textile Heritage Trail
- Dick & Willie Passage Rail Trail*
- G Virginia Ave Trailhead
 - H Liberty St Trailhead
 - I Doyle St Trailhead
 - J Fisher St Trailhead
 - K Spruce St Trailhead
 - L Monogram Foods Smith River Sports Complex - Trail Access
 - M Monogram Foods Smith River Sports Complex - Paw Path & Park
 - N Spencer-Penn Centre Trail
 - O Richard P. Gravely Jr. Nature Preserve Trail
 - P Mountain Laurel Trails

▲ RECREATIONAL FACILITY

- Q Beaver Creek Reservoir
- R Bowen's Creek Recreational Area
- S Fairy Stone Farms Wildlife Management Area
- T Mayo River State Park (Future)
- U Philpott Lake & Marina
- V Riverview Park (Future)
- W Monogram Foods Smith River Sports Complex
- X Turkeycock Wildlife Management Area

KEY

- ✈ Blue Ridge Regional Airport
- 🌊 River
- 🛣 U.S. Highway
- 🏥 Sovah Health (Hospital & ER)
- ❤ LOVEwork



DOWNLOAD OUR APP!

Get it on Google Play

Get it in the App Store

SCAN ME



@VisitMartinsville

@Visit_MHC

VIRGINIA IS FOR LOVERS

Discover all of our dining, shopping, events, and attractions at www.VisitMartinsville.com
(888) 722-3498 | (276) 632-8006 | Tourism@YesMartinsville.com